

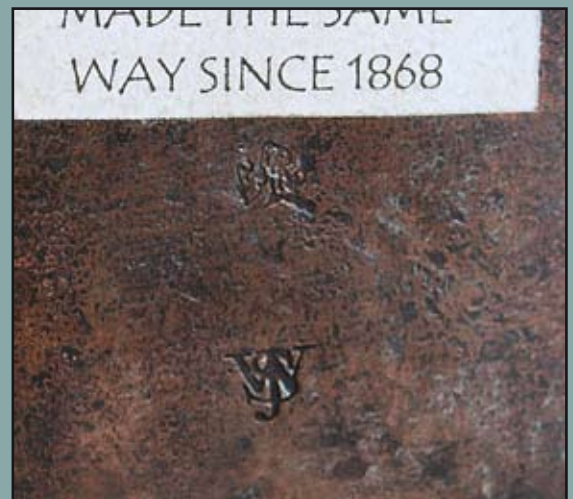
## Replica Jones Bells in Circulation.



Due to the interest and concern expressed by our readers, we have photographed a replica S.W. Jones bell to show its similarities to the originals. The bell at left is an original and the one at right, with the label, is a replica. The paper label is the only mark provided to distinguish this product and once removed it is difficult for the novice to distinguish it as a fake.



These images show details of the of the stamps with the original at left and replica at right. The same applies to the photos of the tongues below.



It has recently been brought to light that replica tongues are being sold and some are being inserted into genuine bells. Because they don't carry any other marks, they are of great concern to the collector.

